



THE COUNTY LINE ROADRUNNER

Published Monthly by the Mobile Amateur Radio Awards Club, Inc.



Volume XXXIX

September 2009

Number 9

From My Point of View

Joyce, WB9NUL

Hurrah! Santa Rosa finally got rain.....3 tenth of an inch! The temperature finally broke. This has been the hottest summer in the 20 years that Barry and I have been here. We actually had over 50 days of 100 degree plus weather. Our normal is 5 days.....we need to talk to the Chamber of Commerce about this.

Barry made a quick trip up to Illinois this last month. One of his dear friends, W9YF passed away. It was a sad trip but the family asked him to speak at the service and he felt it was his way of paying tribute to his friend.

I envy all of you that are going to the Mini in South Carolina. Have a great time and if you get a chance send me a few of the photos that always get taken. I enjoy seeing who all is there. Oh, and have a Scotch for me!

Next month I'll be letting you know some of the things that can be seen here in the valley when you come to the Mini and the National Convention.

The Awards Committee has been working very hard on several of the awards and I believe that they will be presenting their proposals to the BOD in the near future. Watch for Randy's reports as to what is happening.

We have no one who has offered for the National in 2011. I'd love to see some proposals sent to me so that I can offer them to the BOD and membership. I spoke to a couple of you at the last National and would like to see what you have come up with. I'll be happy to work with any of you and enjoy giving you any tips I've come up with over the years.

Stay cool and Happy Labor Day,

Joyce, WB9NUL



Contents

2009 SE Mini	6
Awards	11
Birthdays	10
Dateline CW	2
Dave's Call	15
From Hank, W5VD	13
From My Point of View	1
Last County	3
New Members	15
Treasurer's Report	14
Wet County Lines	8
WY7LL	9

Dateline CW

Ed, KN4Y

There is certainly something in CW County hunting...that seems to produce a gentleness of spirit and serenity of the moment.

Gator walks in carrying two double shots of espresso, "Here Dude start the day as it should be started, hot pure caffeine. What you doing?" "I am looking at my Maryland and New Jersey QSO party logs; I wonder where all their CW operators have gone." "Most likely retired to Florida, what are the numbers?" I show gator the logs, he starts to laugh, "Three QSOs in New Jersey and four in Maryland. Did you have the radio connected to the antenna?"

I sip my espresso and ignore Gator. I point to another log on the floor. "There is my Ohio QSO party log. Made 100 contacts and got three fifth-time around, two natural bingo, two on 80-meters, two 'A' prefix, and four call combos." Gator looks impressed, "That is called a Buckeye experience."

Gator looks at the computer as the phrase; CW County hunting rules, scrolls across the screen. He moves the mouse and the screen lights up, "What is this?" "That is the information for the 2009 South East Mini to be held in Mount Pleasant, South Carolina." "That be in the United States?" "Depends on who you ask. The Mini site is right across the bridge from beautiful and romantic Charleston at the Patriots Point Quality Inn and Suites." We stop yakking and finish off our espresso. The only event better is a 17-meter opening. Gator continues to scan the computer screen.

"I see the deadline to reserve a room is prior to September 16, 2009 and they have a phone number to the hotel, 800-704-4480. Also if you mention the secret code word, 'amateur radio,' you will get the special rate." Gator continues, "Hey you also get a hot Low country Breakfast Buffet. What is a low county buffet?" "You eat off the floor." I am laughing so hard I have to get the bleach bottle.

Gator continues to scan the screen, "I notice there are only a handful of reservations." The county hunters are waiting to see if you are going to attend." "No, I will be at an ACE meeting that weekend." "Once that word gets out the number of reservations will increase." I get a digital salute. "Gator, you will miss seeing the Henley the first submarine that sank a ship in the Civil War." "No wonder you county hunters like Joan Rivers." Gator's cell sounds CW and he is out the door, laughing hilariously. That was deep.

I better go to: <http://semini.superhosts.net/register.html>, and get my reservation in for the South East Mini. I notice a paper in the printer; it is the list of mobiles heard on the county hunter CW frequencies. I scan the list. AA8R, AA0KH, AA9ZZ, AB7RW, AC8W, AI5P, K0ARS, K1ZR, K2HVN, K4BAI, K4EXT, K4YFH, KA3QLF, KA5JWC, KB6TAL, KB6UF, KC3X, KE3VV, KG4VBK, KL1V, KM1C, KM1Z, KN4Y, KS0X, N2OCW, N3TTC, N4AAT, N4CD, N4PJ, N9JF, NF0N, NM2L, NN9K, NT2A, W0GXQ, W0NAC/N0LXJ, W0QE, W3DQT, W4HSA, W4QO, W7FEN, W7IN, W8GE/W8FNW, W8GEJ, W8JJ, W8MP, W9MSE, W9NAC, WA1IIE, WA7JHQ, WB2ABD, WD4ROJ/K4EXT, WY7LL.

I scan the contest list, looks like the Tennessee, Washington Salmon Run, Colorado and Texas State QSO parties will be happening. The Manchester happening bunch can run the Texas QSO party on the way home. I look at the cooler, naw, it is nap time.



Last County
Randy, AA8R

This month let's talk about the life cycle of a Last County application. This process starts when you do the "Paper Work" by filling out the Last County Application on MARAC's website. When you click the "Submit" button the application will be emailed to the Award Manager's email address. The emails stay in my 'Inbox' until I import them into the Awards database by selecting the "Get Email" button in the Award program. (Fig. 1).

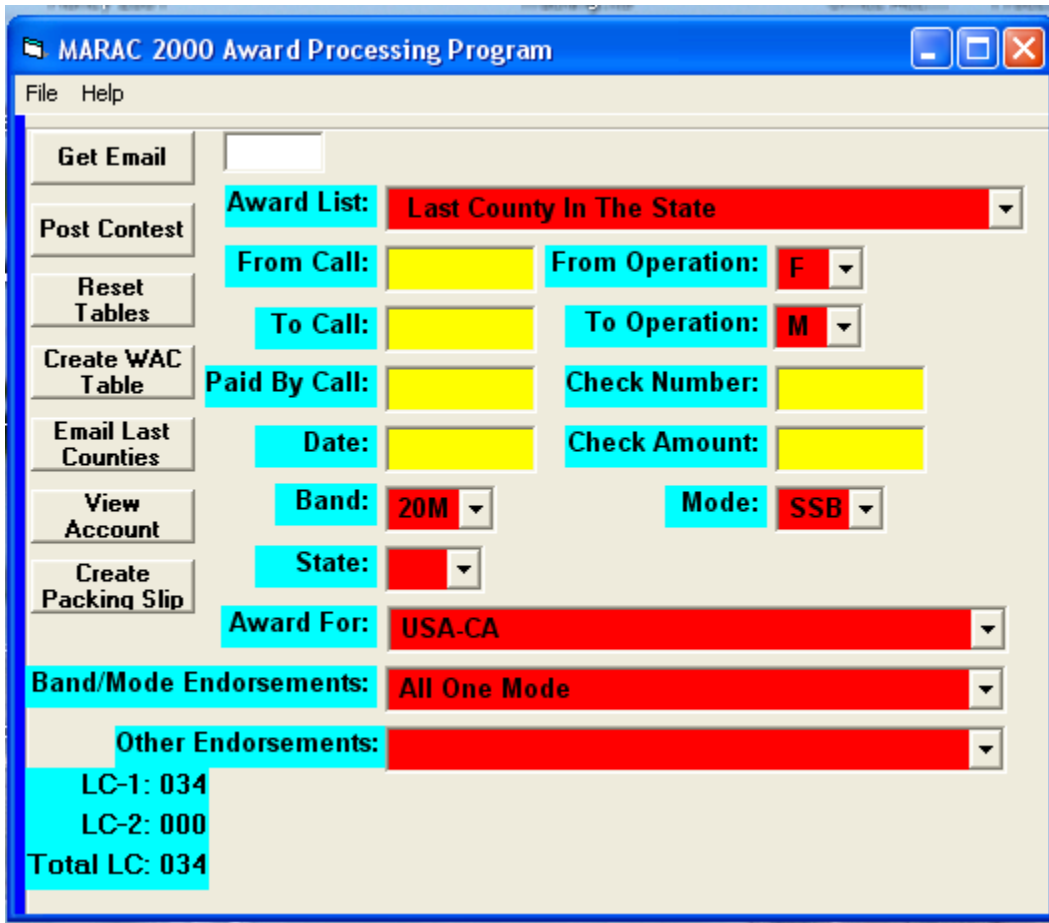


Fig. 1

The "Get Email" process will insert the LC1/LC2 data into the "Email – Last County" table, which is one of several dozen Access tables in the Award's database. The "Email – Last County" table is used as a temporary staging table that is used later in the month for processing all the Last County Applications.

The last couple days of the month I start processing the LC1/LC2s that were inserted into "Email – Last County" by selecting "Email Last Counties" from the Award's program, (Fig. 1) which then displays the "Email Last County" screen,(Fig. 2). This screen shows all the LC applications in the "Email – Last County" table that are waiting to be processed.



Email Last Counties													
Post	Post	Call	Balance Start	Balance End	State	WBOW	New Calls	Duplicate	Check Number	Check Amount	Received Check Number	Received Check Amount	Note
Hide		KC3X			6	0	0	0	2531	\$250			
		KD4HXM			8	0	0	0	0	\$0			
Select All		KE3VV			2	0	0	0	0	\$0			
		KL1V			2	0	0	0	0	\$0			
		KD1U			1	0	0	0	0	\$0			Thank you...
		NODXE			2	0	1	0	0	\$0			K3EZ is not county hunter.
		NOKV			2	0	0	0	0	\$0			
		NOLXJ			1	0	0	0	0	\$0			
		NOXYL			3	0	0	0	0	\$0			
		NOZA			7	0	0	0	0	\$0			
		N1BY			7	1	0	0	0	\$0			
		N4AAT			8	0	0	0	0	\$0			last county 8th time, paid
		N4AKP			1	0	0	0	0	\$0			
		N5UZW			46	0	0	0	0	\$0			
		N6PDB			23	0	0	0	0	\$0			I have this call as kc0jc but

Fig. 2

You'll see in Fig. 2 several LC1's, one LC2 from N1BY and a new call to the Awards program that was worked by NODXE.

The process continues by clicking on one of the calls (N4AAT) and the Awards program displays the "Get Account Info" window, (Fig. 3). The accounting part of the Award program is not fully developed yet and so I need to supply the "Starting Balance". After entering the starting balance I then click on "OK". The Awards program then calculates the total cost to process N4AAT's 8 LC1s and displays the "Ending Balance" for N4AAT (Fig. 4). At this point nothing has been processed until I click on the "POST" button. Clicking the "POST" button causes the Awards program to update several tables in the Awards database and sends a email to N4AAT describing what LC applications were processed and an ending balance.

Next article will continue with "Activities after LC processing".

Post	Call	Balance Start	Balance End	State	WBOw	New Calls	Duplicate
	KC3X			6	0	0	0
	KD4HXM			8	0	0	0
	KE3VV			2	0	0	0
	KL1V			2	0	0	0
	K01U			1	0	0	0
	N0DXE			2	0	1	0
	N0KV			2	0	0	0
	N0LXJ			1	0	0	0
	N0XYL			3	0	0	0
	N0ZA			7	0	0	0
	N1BY			7	1	0	0
X	N4AAT	\$66	\$50	8	0	0	0
	N4AKP			1	0	0	0
	N5UZV			46	0	0	0
	N6PDB			23	0	0	0
	N9QPC						
	N9QS						
	N9STL						
	NF0N			7	0	0	0

Get Account Info

Starting Balance:

Check Number:

Check Amount:

OK Cancel

Fig. 3

Post	Post	Call	Balance Start	Balance End	State	WBOw	New Calls	Duplicate	Check Number	Check Amount	Received Check Number	Received Check Amount	Note
		KC3X			6	0	0	0	2531	\$250			
		KD4HXM			8	0	0	0	0	\$0			
		KE3VV			2	0	0	0	0	\$0			
		KL1V			2	0	0	0	0	\$0			
		K01U			1	0	0	0	0	\$0			Thank you...
		N0DXE			2	0	1	0	0	\$0			K3EZ is not county hu
		N0KV			2	0	0	0	0	\$0			
		N0LXJ			1	0	0	0	0	\$0			
		N0XYL			3	0	0	0	0	\$0			
		N0ZA			7	0	0	0	0	\$0			
		N1BY			7	1	0	0	0	\$0			
X		N4AAT	\$66	\$50	8	0	0	0	0	\$0	0	\$0	last county 8th time, p
		N4AKP			1	0	0	0	0	\$0			
		N5UZw			46	0	0	0	0	\$0			
		N6PDB			23	0	0	0	0	\$0			I have this call as kc0j

Fig. 4

2009 SE Mini

Location: Quality Inn & Suites; Mount Pleasant, SC
Dates: October 22-24, 2009
Directions: Follow I-26 East until it ends and take exit 220. Follow signs to Mt. Pleasant/Hwy 17 North. Cross Cooper River Bridge and take Coleman Blvd./Hwy 703 exit. On Coleman Blvd/Hwy 703 turn right at first traffic light. Hotel is on the right.

Room Rate: More details will be posted at <http://semini.superhosts.net/> \$89.99 Thurs, \$127.99 Fri/Sat night plus tax. Call the hotel directly for reservations and mention "amateur radio". The phone number is 800-704-4480. The rate is valid only through September 16- Make your reservations early!

Hotel Notes: There is a 2 night minimum stay, and a one night deposit is required. Cancellations must be done 2 weeks in advance, and all but 25\$ of your deposit will be refunded. Cancellations within 2 weeks will be charged for 2 nights.

Parking: Ample FREE parking, with no overhangs to eat antennas!
Activities: No group activities are planned, but area attractions include Historic Charleston tours, shopping, dining, golfing, plantations, Patriot's Point, The Hunley & Fort Sumter.

Dinner: Buffet Style Dinner- 20\$/person.
Registration: 15\$ for first person, 5\$ each additional person.
Website: More information, including online registration is available at:
<http://semini.superhosts.net/>

Send registration and fees to:

John M. Hoyt – W5UGD
118 Halifax Rd
Easley, SC 29642

2009 SE Mini Registration

Callsign: _____

Name (to be put on badge):

Address:

USA-CA#: _____

Additional Names/Calls/USA-CA Numbers:

Basic Registration: 15.00

Additional Registrations _____ x 5.00 _____

Banquet Tickets _____ x 20.00 _____

Total _____

Wet County Lines

Terry, WQ7A

“A County Line boundary may be a river, lake, water reservoir, creek, brook, stream, or other watercourse, including a dry riverbed or arroyo. This type of county boundary is called a Wet County Line. As long as a Wet County Line can be run safely, it may be run using the same requirements as any other County Line.”

So sayeth the MARAC rules. So some discussion is in order to help explain some of this grey area of “Wet County Lines”. Let us take two recent examples of these lines and dissect them. How about the county line in Montana of Fergus and Phillips? These two counties are separated by the Missouri River. The river is wide at this point and is only crossed by one bridge on US-191. This is an example of a true wet line. The adjoining counties have no boundary in common that is not the river. Of course if you were stopped in the center of the river where the GPS declared it the dividing line and can run it safely then have at it. It would be up to the mobile and the contact station to know that it is a safe operation and log it as a contact for both counties. The MARAC Logger program will not allow you to select this as a county line contact. This is by design to give you some warning that the contact is in question. If you believe this is a legal and safe operation, Logger will force you to log both counties separately.

Another example where an apparent wet line MAY be legal and safe. Let’s look at the line of Phelps and Buffalo in Nebraska. The problem here is that this is MOSTLY a wet county line separated by the Platte River. However over a period of time the river has changed its course slightly. There are portions of this “Wet County Line” that are now on dry land. It would be possible for the mobile to move off the road and run this line quite safely. There are several roads that cross this river and the adjoining county lines. There are a lot of examples along the Platte, Mississippi, Missouri and other rivers where this has taken place. MARAC Logger will allow this to be entered as a county line contact.

One last example where this grey area still exists. Take the example of Tazewell, Virginia and McDowell, West Virginia. Some of this county line is ‘wet’ and some is dry west of highway 16. There are dozens of this type of separation. It is a judgment call on the parties involved as well as the Logger team as to whether the contacts are legal and safely being run. Presently it is up to this author to pass judgment on whether an individual county line should be included in the MARAC Logger acceptable table of county lines. I use mostly DeLorme Street Atlas USA to do the research to aid in my decision.

Presently there are nearly 15,000 county lines in the county line table that MARAC Logger uses. I have, on rare occasion, added new ones to this table and even deleted one recently. However there is always room for improvement. I am collecting a list of county lines that are not presently included in MARAC Logger that are often run safely. Someday these may be in Logger as an alternate to the “Legal” county lines. If you have any candidates for this new collection, please send them to me and include the road(s) or sites that make your suggestions qualify for consideration.

I hope this sheds some light on a controversial subject. “It ain’t always easy”.

73

Terry, WQ7A

WQ7A@COMCAST.NET

WY7LL

Leo C. Bingham, WY7LL
USA-CA All Counties #1184, April 27, 2009

I became interested in radio at a very young age. I was in first or second grade (1968) in a small oil field community named Linch, Wyoming. My parents owned an interest in an oil field pipeline ditching and construction company there. My father ran the field operations while my mother ran the office, bookkeeping aspect of the company.

One day my father brought home a Johnson Messenger 223 base station for my mother's office, along with a couple of Johnson Mobile radios for the trucks. Oh how that base station caught my eye . . . the thought that you could push a button on that microphone and someone a world away could hear you. I was hooked from the start.

I watched my father struggle for years trying to get more range by using bigger antennas and amplifiers with little return for his effort. Over the years my folks always had two-way radios in their automobiles and homes. They became dependent on being able to communicate with them, as this was way before cell phones, and living in Wyoming it may be 60 miles or better to the next town, gas station, or even ranch house. Through the years I found that you could make long-distance contacts with those so-called "chicken band" radios.

By the time I was 16, I had worked my way through numerous radios and had graduated, or so I thought, to the big time. I had acquired a Tempo One ham radio that had a VFO and more power to make those elusive contacts. Finally at the age of 26 (1983) I met someone who would introduce me to ham radio. I joined the Novice classes that were being given, learning theory and code with new abandon. I took my Novice test and received my ticket in the mailbox on April 9, 1984. Now I really was in the big leagues!

I upgraded to Technician about six months later and to General on September 22, 1985. Best as I can recall on November 10, 1985 I was tearing up the 20-meter band making DX contacts left and right, tuning the VFO on the Yaesu FT-101EE and breaking pile-ups whenever I would tune into one. I tuned into a pile-up on 14.336 with calls being dumped in by the pound, so I put my call in, made my contact, and waited for the DX station's call. When it came back—KC3RY on the county line of Sussex and Warren, New Jersey—I thought there had to be a mistake, so I listened for a time until I surmised that I had stumbled onto the County Hunters Net. So off I went searching for more DX stations.

As time passed, I would return to 14.336 when DX conditions were not good. Soon I was out running counties for some folks who had asked for special contacts that they needed to finish up for a particular award.

My wife and I enjoyed the day trips and even some overnights, and as time went on whenever we were traveling we made sure we had a radio to give out counties. In the 25 years I have run every county in Wyoming, Montana, North and South Dakota, Minnesota, Wisconsin, and Iowa and most in Nebraska. I had acquired a good number of counties just by giving out counties, but how many did I have? I spent weekends and evenings all of one winter typing contacts into a new computer-logging program, as the paper logs had become a paper tiger. Now I had to go back over years of logs and send cards. Luckily, I did get back a large number of cards from operators who still had their logs even years later.

Now to get serious about finishing up USA-CA. In January 2006 I was down to 350 counties. I decided it was time to meet some of

the folks I had been working for years, and my wife and I set out for Appleton, Wisconsin in July. Without many people knowing, we were headed to the National County Hunters Convention. While running a county in Minnesota, a station called and wanted to know where I was. After confirming my location he said look in your rearview mirror. Cliff, AC0B, was only the second county hunter I had ever met face to face in my 22 years of county hunting, and he was going to the convention, too.

When I arrived at the convention I was shocked at the reception that this "Wyoming cowboy" received. Everyone treated us so well, like long lost family, and within minutes we had a dinner invitation for the evening. As the weekend progressed, I felt like I was right at home. It was great to put faces with names and calls. We attended the national in Denver in 2007 and the national in Michigan last year.

Finally, in February 2009 I was down to four counties to work. One was in Montana, one in Idaho, and two in Georgia. We had planned a week of vacation in the middle of February to go to a law enforcement convention in Florida. At the last minute our convention plans were canceled, so we were off to Montana and Idaho to get those confirmed from WY7ML on 2 meters. Then to start working on Georgia contacts. I sent an e-mail to a ham in Wheeler, GA, who agreed to a schedule. At 6:05 AM that Saturday we made a 40-meter contact, and I was now down to one to go. I had also made a schedule with Don, K3IMC, whom I had met at the two conventions I attended. Don was making a special trip for Upson, Georgia—my very last. At 9:21 AM I was mobile and heard KM9X trying to get Don and myself together. We made our contact on 40 meters SSB, although very weak copy. Then we iced it off by making a 5/9 contact on 20 SSB and a 30-meter CW contact.

After 25 years I had finally made that last county contact. As I looked over to my wife in the passenger seat, she had trickles of tears she was trying to conceal behind her sunglasses. I think she was happier for me than I was for myself. I must admit I enjoy being the hunted more than hunter. We still enjoy putting out counties when we travel.

We have met a fantastic group of people during our county hunting experiences. The list of people to thank is long and distinguished. My wife and driver, Chris, WY7ML, is at the very top of the list. She does the bulk of driving while I navigate and log on the computer. Thanks to the net control volunteers and the operators who run mobile. Without those folks, none of us would ever finish USA-CA All Counties. You all know who you are, and I thank and salute you, one and all.—73, Leo WY7LL



*Leo C. Bingham, WY7LL, USA-CA
 All Counties #1184.*

Birthdays

Roadrunner - Birthdays	
Current Call	Birthday Date
W1VA	Sep - 01
AD4IA	Sep - 01
KQ4KI	Sep - 01
KK5LC	Sep - 01
WE8D	Sep - 01
LA9SN	Sep - 01
K1BS	Sep - 02
AC4GO	Sep - 02
K6CRA	Sep - 02
N5ZF	Sep - 03
WA6GQY	Sep - 03
K4XI	Sep - 03
WB2GFE	Sep - 03
W9GUY	Sep - 04
N9PM	Sep - 04
N3RM	Sep - 04
KB7RE	Sep - 04
NN9K	Sep - 04
W6RK	Sep - 04
KU4MP	Sep - 05
WD9HAW	Sep - 05
KA0W	Sep - 05
W3UJT	Sep - 05
WA3LVH	Sep - 05
KE5JA	Sep - 06
N7MPS	Sep - 06
W9OO	Sep - 06
KN4S	Sep - 06
WA2BEG	Sep - 07
W9LMT	Sep - 07
N5NAA	Sep - 07
KN5I	Sep - 07
N9AC	Sep - 08
AB7PN	Sep - 08
KG9HC	Sep - 09
N8STF	Sep - 09
W5XFM	Sep - 09
KG7Q	Sep - 09
K4SL	Sep - 09
KN5H	Sep - 09

Roadrunner - Birthdays	
Current Call	Birthday Date
KJ7PO	Sep - 09
N7WL	Sep - 09
K8XF	Sep - 10
KB5FU	Sep - 10
NW1O	Sep - 10
W3RWJ	Sep - 10
NX0V	Sep - 10
W0OWY	Sep - 11
K9WA	Sep - 11
WG9A	Sep - 12
N9STL	Sep - 12
W0MU	Sep - 12
N8MBW	Sep - 12
W5SM	Sep - 12
N5DUQ	Sep - 12
N9PC	Sep - 12
WU7R	Sep - 13
N8RYD	Sep - 13
KD6WW	Sep - 13
WA5OPO	Sep - 14
WA9QNI	Sep - 14
K4NK	Sep - 14
N7CYQ	Sep - 15
KG5IZ	Sep - 15
KJ4KX	Sep - 15
NE5Y	Sep - 15
WA0LRQ	Sep - 16
W3IQ	Sep - 16
K8NI	Sep - 16
KF2GP	Sep - 16
W9CTA	Sep - 16
AD7QN	Sep - 17
WA4CUU	Sep - 17
W0IM	Sep - 17
K0XT	Sep - 17
AK6H	Sep - 17
WJ9S	Sep - 17
KG5RJ	Sep - 17
WM3T	Sep - 17
NX4P	Sep - 18

Roadrunner - Birthdays	
Current Call	Birthday Date
N4PJ	Sep - 18
W6QE	Sep - 18
N8MYC	Sep - 18
KE3NR	Sep - 18
N5QQ	Sep - 19
K5KDG	Sep - 19
KC7OD	Sep - 20
NB7B	Sep - 20
WB3JDC	Sep - 20
W9NS	Sep - 21
NN6AA	Sep - 21
KN4CQ	Sep - 21
WB7PMZ	Sep - 21
AC4SW	Sep - 21
KA1OCL	Sep - 21
KL7IFP	Sep - 22
K1CGI	Sep - 22
N9BAE	Sep - 22
K2UF	Sep - 23
N0GUR	Sep - 23
KR4ZH	Sep - 23
W3CR	Sep - 23
KA6RAT	Sep - 23
AD8W	Sep - 24
KA1SF	Sep - 25
KD5YN	Sep - 25
N7WO	Sep - 25
K3VQO	Sep - 25
KR4OE	Sep - 25
KB5WY	Sep - 26
W5HV	Sep - 26
N0UF	Sep - 26
AJ0C	Sep - 26
W8EB	Sep - 27
WB0JYB	Sep - 27
W7KFA	Sep - 27
K1LH	Sep - 27
AE2Z	Sep - 27
KO4EA	Sep - 27
K9FP	Sep - 28

Roadrunner - Birthdays	
Current Call	Birthday Date
W7FGD	Sep - 28
K7GA	Sep - 28
NK8P	Sep - 28
K0BXF	Sep - 29
W1IBS	Sep - 29
KD4RKJ	Sep - 29
N5KB	Sep - 29
WA6OTV	Sep - 29
N4RNR	Sep - 29
N5VT	Sep - 29
N4NX	Sep - 29
WA2CNJ	Sep - 29
KC3X	Sep - 29

Awards

Roadrunner Issued Per Month			
Call	Date	Award	Number
AA9JJ	8/28/2009	Last County Count 700	# 14
WQ7A	8/18/2009	Last County Count 300	# 55
AI5P	8/22/2009	Last County Count 775	# 7
N9STL	8/25/2009	Last County Count 75	# 242
N5UZW	8/28/2009	Last County Count 100	# 214
K2HVN	8/28/2009	Last County Count 500	# 28
W0GXQ	8/28/2009	Last County Count 400	# 38
KM1C	8/28/2009	Last County Count 50	# 314
KL1V	7/27/2009	Last County Count 700	# 13
AC2J	8/28/2009	Last County Count 250	# 68
N2OCW	8/28/2009	Last County Count 200	# 97
N7ID	8/28/2009	Last County Count 500	# 29
N4AAT	8/28/2009	Last County Count 725	# 9
W8DCD	8/28/2009	Last County Count 25	# 478
AB4YZ	8/28/2009	Last County Count 550	# 24
KL1V	8/28/2009	Last County Count 725	# 10
ND9M	8/28/2009	Last County Count 150	# 147
N9QPQ	8/28/2009	Last County Count 800	# 5
KN4Y	8/28/2009	Last County Count 75	# 243
N0KV	8/28/2009	Last County Count 125	# 158
KB6UF	8/28/2009	Last County Count 700	# 15
N4CD	8/28/2009	Last County Count 1700	# 1
KB0BA	8/21/2009	BINGO	# 311

Call	Date	Award
AD8W	02-Aug-09	Big Rig
AD8W	02-Aug-09	Cliff Corne Jr. (K9EAB) Memorial
W8RCW	24-Aug-09	Cliff Corne Jr. (K9EAB) Memorial
AD8W	02-Aug-09	Gemini - Jack Scroggins (W0SJE)
W8RCW	24-Aug-09	Gemini - Jack Scroggins (W0SJE)
AD8W	22-Aug-09	Mobile Award - Cat 1 - Multiple State
AD8W	22-Aug-09	Mobile Award - Cat 3 - Multiple County
AD8W	02-Aug-09	Native American Counties
KL1V	27-Aug-09	Ran All State - 1st Time
AB4YZ	12-Aug-09	Ran All State - 1st Time
KL1V	27-Aug-09	Ran All State - 1st Time
AB4YZ	12-Aug-09	Ran All State - 1st Time
WQ7A	01-Aug-09	Ran All State - 1st Time
K8AO	01-Aug-09	Ran All State - 1st Time
AB4YZ	12-Aug-09	Ran All State - 1st Time
KL1V	27-Aug-09	Ran All State - 1st Time
KL1V	27-Aug-09	Ran All State - 1st Time
KL1V	27-Aug-09	Ran All State - 1st Time
AB4YZ	12-Aug-09	Ran All State - 1st Time
AB4YZ	12-Aug-09	Ran All State - 1st Time
KL1V	27-Aug-09	Ran All State - 1st Time
AB4YZ	12-Aug-09	Ran All State - 1st Time
W0NAC	27-Aug-09	Ran All State - 2nd Time
AD8W	02-Aug-09	US Presidents Counties
AD8W	02-Aug-09	USA - Single Band
AD8W	02-Aug-09	USA - Single Band
N4AAT	02-Aug-09	USA-CW
W8CE	23-Aug-09	USA-CW
AK8A	13-Aug-09	USA-CW
W6TMD	27-Aug-09	USA-PA - N
KI7WO	23-Aug-09	Worked all Counties - 2nd Time
W8CE	25-Aug-09	Worked all Counties - 2nd Time
AK8A	13-Aug-09	Worked all Counties - 6thTime

From Hank, W5VD

**By permission of the author from
the San Antonio Express-News**

State's earliest county lines tend to be messy, that is, more organic

BY GARY SCHARRER

gscharrer@express-news.net

AUSTIN — Look at the layout of counties on a map of Texas and you'll note the neatly drawn squares and rectangles in the Panhandle, West Texas and areas southwest of San Antonio.

But the counties making up East and Central Texas are jagged and irregular, with no apparent rhyme or reason.

Or is there?

Because of its independence, the Republic of Texas did not follow U.S. rules for surveying land and mapping property in the conventional pattern of block, range and township, says Jerry Drake, deputy commissioner in charge of archives for the Texas General Land Office.

"Those files don't give us any insight into why people set county boundaries specifically

TEXARCANA

the way they did, but there are some things that we can kind of deduce from that," Drake said. "Our original land grant surveys were more organic. They tend to follow the rules of the road — what the rivers looked like, what the hills and valleys looked like."

Pioneers who mapped the

counties where most people lived in early Texas followed the contours of the land — and rivers — in Central and East Texas.

"There's a practical side to that," Drake said. "If a boundary line follows a river, it's pretty much nonnegotiable."

County lines may not mean much to the average Texan today. "But a century ago, that kind of stuff would have been on

top of everybody's tongue," Drake said. "When we were an agrarian society, everybody was concerned about borders and fences and county lines."

Most counties west of the Republic's populated areas are mapped by block, range and township because they were organized after Texas became part of the United States, and thus were subject to federal rules for granting land, Drake said.

Because there are far fewer rivers in the Panhandle and western portions of Texas, mapping the land in quadrangles — squares and rectangles — "is an easy way to do it because you don't have anything you can call for on the ground as a natural boundary," Drake said.

But without something real on the ground, boundary disputes between counties flare up occasionally, he said.

**Treasurer's Report
August 31, 2009**

Funds Balance July 31, 2009 **\$16,649.74**

Income:

Dues	\$788.00
Money Market Interest	\$3.37
Logger Distribution	\$140.00
Awards Manager Income (AA8R)	\$1,772.00
	<u>\$2,703.37</u>

Expenses:

Bank Fee	\$3.50
Fairmont Awards - Plaques	\$934.25
Stafford Engraving – Plaques	\$390.00
Print Right – Road Runner	\$375.20
Awards Manager Expenses	\$644.44
Secretary Expenses	\$350.32
Contribution to Michigan Mini	\$300.00
	<u>\$2,997.71</u>

(\$294.34)

Account Balances **\$16,355.40**

Checking Account \$1,774.81

Money Market Account \$14,580.59

\$16,355.40

Note:

The following monies are not included in the above:

Awards Chairman's Funds \$1,200.00

Convention Chairman's Funds - 2009 \$4,000.00



New Members

September 2009

Marac No. State	Call Home County	Full Name Phone Number	Address	E Mail Address	City and
R-4378 1-989-835-5562	N8WTQ French	Doris (Dorie) French billefrench@parishonlin	940 W. Stewart Road	Midland, MI 48640	Midland
R-4379 1-360-574-1152	AC7UH	Barbra J Yasson byasson@pacifier.com	13208 NE 5th Ave	Vancouver, WA 98685-2679	Clark
R-4380 1-406-449-2667	WU7R	Ci Jones bpci@aol.com	5407 Kerr Drive	Helena, MT 59602	Lewis and Clark



Dave's Call
Dave, KU4YM

Hard to believe so much time has passed since I first tackled this job! I think my attempt was back in July 2005. Wow!

Perhaps it's time to remind our electronic readers that the Table of Contents on the first page is interactive. That is, click on the topic and you'll jump to that page. If you open the Bookmarks tab on the left side of your open Adobe Reader window, you'll see those topics on the left side of your screen so you can jump back and forth.

Paper subscribers still have turn those pages on their own. Sorry 'bout that. You should also know that MARAC subsidizes you subscription. Dues just don't cover the costs of printing, collating, folding, labeling and mailing.

Lastly, I'm overdue thanking all the contributors to each issue. Especially those of you who contribute every month even though you've got other duties to perform for MARAC. THANKS!



The County Line Roadrunner
MARAC Secretary
111 Lakeview Dr
Leesburg, FL 34788



“A Road Runner Is A Very Fast Bird”

Monthly Deadline for Articles is the 25th!

Board of Directors

President: Joyce Boothe, WB9NUL, 21175 FM2556, Santa Rosa, TX 78593 1-956-636-9161, joycenul@aol.com

Vice-President: Chuck Secrest, AD8W, 4033 N West Bay Shore Dr, Suttons Bay, MI 49682, 231-271-7907, chuck@ad8w.com

Secretary: Norm Ellison, 111 Lakeview Dr, Leesburg, FL 34788, w2ibb1@embarqmail.com

Treasurer: Terry Dummler, WQ7A, PO Box 500, Yelm, WA 98597, 253-370-3377, wq7a@comcast.net

Great Lakes Director: Randy Hatt, AA8R, 7878 W County Line Rd, Howard City, MI 49329, 517-812-9468, aa8r@aol.com

North Central Director: Cliff Bird, AC0B, 6140 Hwy 194, Saginaw, MN 55779, 218-343-7473, ac0b@arrl.net

Northeast Director: Carol-Ann Reitman, AB2LS, 100 Woodbury Rd, Highland Mills, NY 10930, 845-928-6238, ab2ls@optonline.net

South Central Director: Ross Harrell, N0ZA, 2433 Bella Pago Dr, Grand Junction, CO, 81503, 970-216-6604, n0za@bresnan.net

Pacific Director: Robert T. Devine, KC6AWX, 407 Alameda Del Prado, Novato, CA 94949-6302, 1-415-883-8980, kc6awx@marac.org

Southeast Director: David Splitt, KE3VV, 6111 Utah Ave. N.W., Washington, DC 20015-2005, 1-202-362-3355 ke3vv@marac.org

Appointees

Awards Manager: Randy Hatt, AA8R, 7878 W County Line Rd, Howard City, MI 49329, 517-812-9468, aa8r@aol.com

Newsletter Editor: Dave Hyatt, KU4YM, 159 Schooner Bend Ave, Summerville, SC 29483, 843-442-8666, dh-hyatt@ieee.org

Sunshine Coordinator: Pat Reiner, KM6QF, 16931 Aldon Rd, Encino, CA, 213-999-0100, lovedoxies@aol.com

Webmaster: Mike Fatchett, W0MU, PO Box 3500, Parker, CO 80134, 303-548-7222, w0mu@w0mu.com

Custodian, Club Call, K9DCJ: Joyce Boothe, WB9NUL, 21175 FM2556, Santa Rosa, TX 78593 1-956-636-9161 joycenul@aol.com

Election Coordinator: Lloyd Smith, NX4W, 4413 NW 36th Dr, Gainesville, FL 32605, 352-339-6457, nx4w@arrl.net

MARAC General Counsel: David Splitt, KE3VV, 6111 Utah Avenue NW Washington, D.C. 20015-2461, 1-202-362-3355, ke3vv@marac.org

Computer Data Manager: Gene A Olig Sr, KD9ZP, W 4325 4th St Rd, Fond du Lac, WI 54936, 920-923-0130, kd9zp@att.net

Dues with a printed copy of the Newsletter are \$20.00 per year. Dues with an Electronic copy are \$14.00 per year. Dues with the Newsletter mailed to all continents other than North America 30.00 a year.